

Phylogenetic placement of the Mount Bamboutos endemic skink, *Trachylepis mekuana* (Chirio and Ineich, 2001)

MICHELE M. KAMENI N.¹, WALTER P. TAPONDJOU N.², WERNER CONRADIE^{3,4,*}

¹ *Laboratory of Zoology, University of Yaoundé I, Cameroon*

² *Florida Museum of Natural History, University of Florida, Gainesville, Florida, USA.*

³ *Port Elizabeth Museum (Bayworld), 23 Beach road, Humewood 6013, Gqeberha, South Africa*

⁴ *Department of Nature Conservation Management, George Campus, Nelson Mandela University, George, South Africa*

* *Corresponding author. Email: werner@bayworld.co.za*

SUPPLEMENTARY MATERIAL

Table S1. List of samples used for the phylogenetic analyses, with their associated GenBank accession numbers for each gene marker utilised.

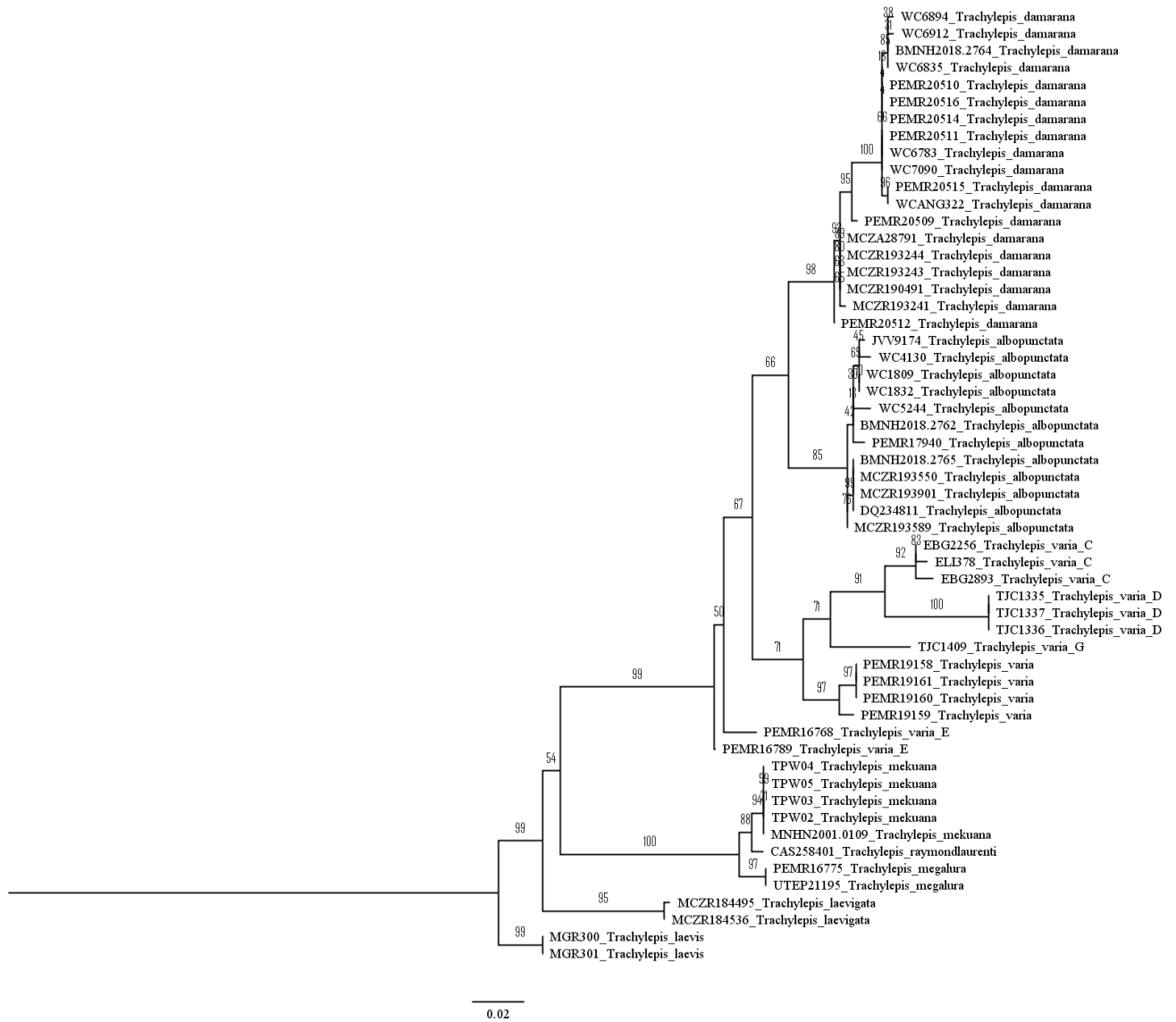
Sample Number	Taxon name	<i>16S</i>	<i>ND2</i>	<i>RAG1</i>	<i>KIF24</i>
WC-1832/ PEM R21738	<i>Trachylepis albopunctata</i>	MG605609	MG605225	MG605367	MG605435
MCZ R193901	<i>Trachylepis albopunctata</i>	MG605652	MG605280	MG605377	MG605445
MCZ R193589	<i>Trachylepis albopunctata</i>	MG605656	MG605285	MG605382	MG605447
BMNH 2018.2762	<i>Trachylepis albopunctata</i>	MK464281			
BMNH 2018.2765	<i>Trachylepis albopunctata</i>	MK464280			
DQ234811	<i>Trachylepis albopunctata</i>	DQ234811			
JVV 9174	<i>Trachylepis albopunctata</i>	MG605660	MG605289	MG605386	
MCZ R193550	<i>Trachylepis albopunctata</i>	MG605651	MG605279	MG605376	
PEM R17940	<i>Trachylepis albopunctata</i>	MG605586			
WC-1809/ PEM R21739	<i>Trachylepis albopunctata</i>	MG605608	MG605224	MG605366	
PEM R20509	<i>Trachylepis damarana</i>	MG605575	MG605192		MG605419
MCZ R193241	<i>Trachylepis damarana</i>	MG605622	MG605250	MG605368	MG605438
PEM R20514	<i>Trachylepis damarana</i>	MG605629	MG605259	MG605370	MG605439
BMNH 2018.2764	<i>Trachylepis damarana</i>	MK464279			

Sample Number	Taxon name	<i>16S</i>	<i>ND2</i>	<i>RAG1</i>	<i>KIF24</i>
MCZ A28791	<i>Trachylepis damarana</i>	MG605624	MG605252		
MCZ R190491	<i>Trachylepis damarana</i>	MG605621	MG605244		
MCZ R193243	<i>Trachylepis damarana</i>	MG605623	MG605251		
MCZ R193244	<i>Trachylepis damarana</i>	MG605625	MG605253		
PEM R20508	<i>Trachylepis damarana</i>		MG605186	MG605338	
PEM R20510	<i>Trachylepis damarana</i>	MG605628	MG605258		
PEM R20511	<i>Trachylepis damarana</i>	MG605627	MG605256	MG605369	
PEM R20512	<i>Trachylepis damarana</i>	MG605583	MG605201	MG605347	
PEM R20515	<i>Trachylepis damarana</i>	MG605578	MG605196	MG605344	
PEM R20516	<i>Trachylepis damarana</i>	MG605574	MG605187	MG605339	
WC-ANG-322	<i>Trachylepis damarana</i>	MG605577	MG605195	MG605343	
WC-ANG-362	<i>Trachylepis damarana</i>		MG605257		
MCZ R184536	<i>Trachylepis laevigata</i>	MG605594	MG605210	MG605357	MG605430
MCZ R184495	<i>Trachylepis laevigata</i>	MG605597	MG605212	MG605361	MG605432
PEM R19158	<i>Trachylepis varia</i>	MG605644	MG605272		MG605441

Sample Number	Taxon name	<i>16S</i>	<i>ND2</i>	<i>RAG1</i>	<i>KIF24</i>
PEM R19159	<i>Trachylepis varia</i>	MG605643	MG605271		
PEM R19160	<i>Trachylepis varia</i>	MG605646	MG605274		
PEM R19161	<i>Trachylepis varia</i>	MG605645	MG605273		
EBG 2256	<i>Trachylepis varia C</i>	MG605661			
EBG 2893	<i>Trachylepis varia C</i>	MG605664			
ELI 378	<i>Trachylepis varia C</i>	MG605662			
TJC 1335	<i>Trachylepis varia D</i>	MG605647	MG605275	MG605373	MG605442
TJC 1337	<i>Trachylepis varia D</i>	MG605649	MG605277		MG605443
TJC 1336	<i>Trachylepis varia D</i>	MG605648	MG605276	MG605374	
PEM R16768	<i>Trachylepis varia E</i>	MG605525		MG605308	MG605403
PEM R16789	<i>Trachylepis varia E</i>	MG605548		MG605323	
TJC 1409	<i>Trachylepis varia G</i>	MG605650	MG605278	MG605375	MG605444
PEM R16775	<i>Trachylepis megalura</i>	MK792025			
UTEP 21195	<i>Trachylepis megalura</i>	KU236715			
CAS 258401	<i>Trachylepis raymondlaurenti</i>	MG605669	MG605304	MG605400	MG605461

Sample Number	Taxon name	<i>I6S</i>	<i>ND2</i>	<i>RAG1</i>	<i>KIF24</i>
MNHN 2001.0109	<i>Trachylepis mekuana</i>	AB057398			
KU 352133/TPW02	<i>Trachylepis mekuana</i>	PQ472583	MK583046		
KU 352134/TPW03	<i>Trachylepis mekuana</i>	PQ472584	MK583045		
KU 352114/TPW04	<i>Trachylepis mekuana</i>	PQ472585	MK583044		
KU 352115/TPW05	<i>Trachylepis mekuana</i>	PQ472586			
MGR300	<i>Trachylepis laevis</i>	MK792015		MK791869	
MGR301	<i>Trachylepis laevis</i>	MK792016		MK791897	

Figure S1: Maximum Likelihood (ML) *16S* phylogeny.



Supplementary Figure 2: Maximum Likelihood (ML) ND2 phylogeny.

